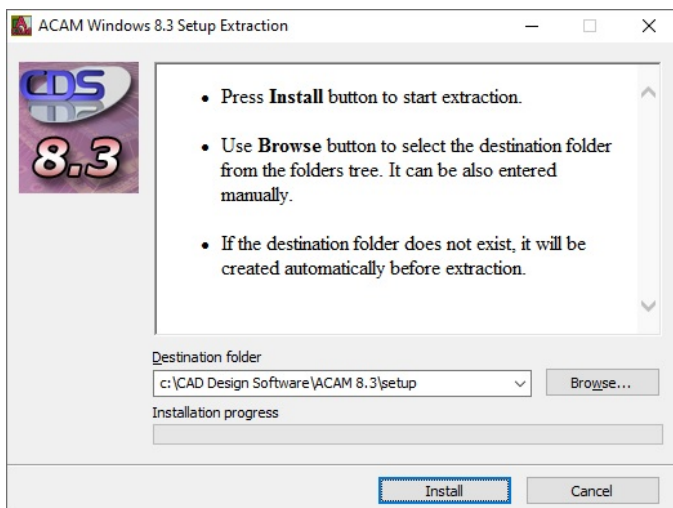


# Installation Guide for ACAM Automated Gerber & GDS Import / Export 8.3 software program for use with MS Windows® PC

Please check the **System Requirements** [http://www.cad-design.com/support/cds\\_system\\_requirements.html](http://www.cad-design.com/support/cds_system_requirements.html) before starting. Users should have Installation / Admin Rights for the computer or setup and EPD software may not function correctly.

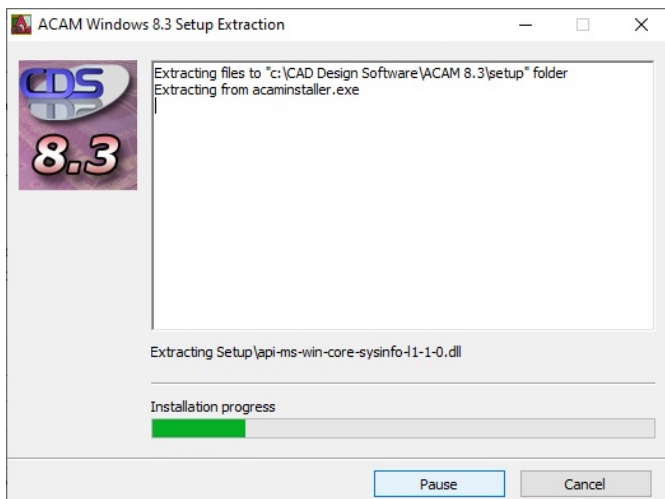
Double Pick the Installation Icon to begin the **Extraction** of the **Install** files.

This is only an **Extraction** of the Setup files and **Not the main Installation**.



It is recommended to use the default path `..\CAD Design Software\ACAM 8.3\Setup` file path. You may change to a different drive if required other than C:\.

Pick **Install** to begin extracting the Installation files that will be used after extraction.



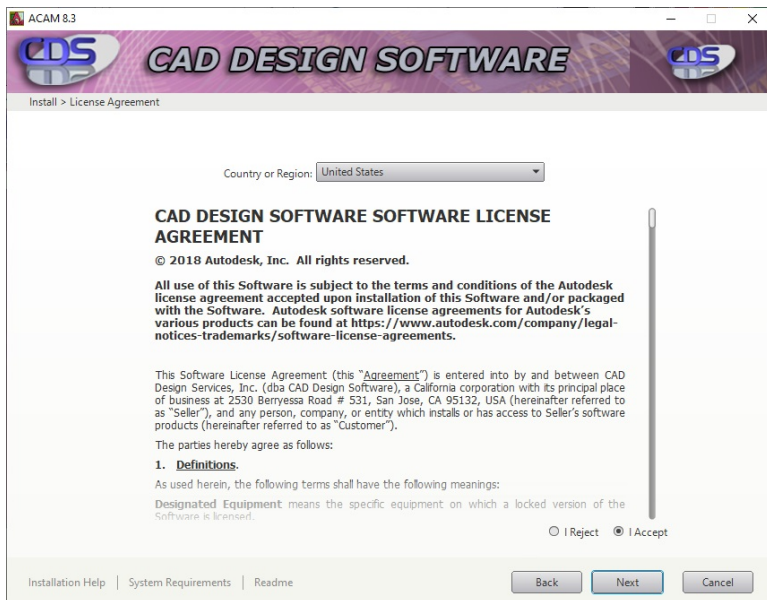
\*If the Main Installation does not Start, navigate to the **C:\CAD Design Software\ACAM 8.3\setup** folder and run the **setup.exe**

After the Installation extraction (this will take a few minutes), the main Installation screen will appear\*.

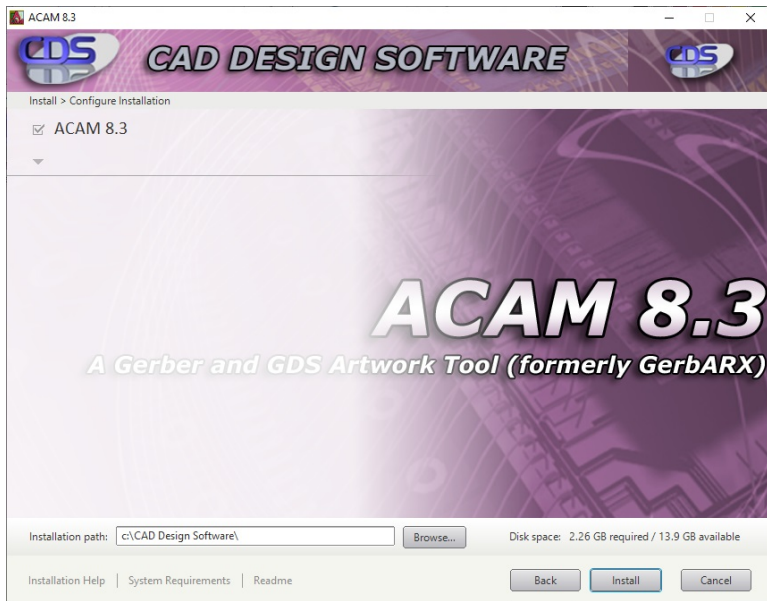


On the First Screen pick on the **Install** button to begin the main installation of the **ACAM** Software program.

There are Links below for **Installation Help**, **System Requirements** and the general **Read Me**.



On the next screen, select either **I Accept** or **I Reject** for Acceptance or Denial of the **License Agreement** and then pick **Next**.

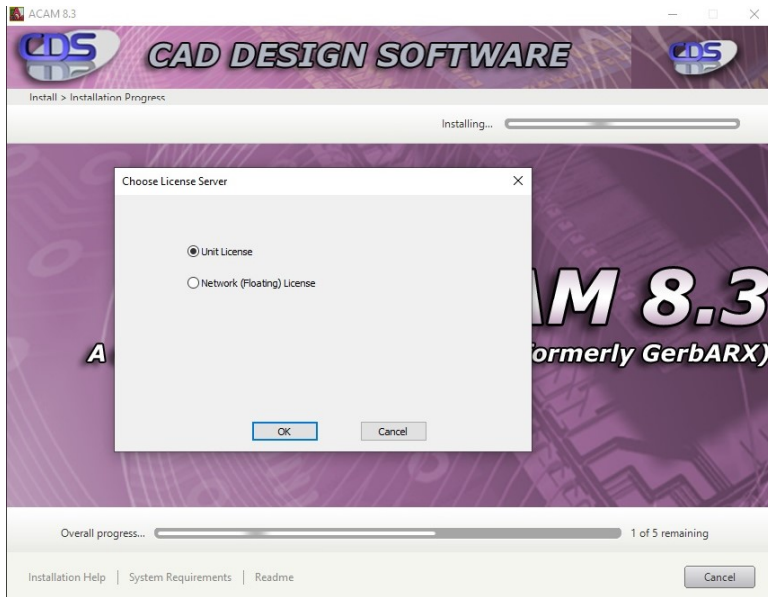


The next screen displays an option to select the HD Drive letter\* and folder destination for installation of the **ACAM** Software Program. Pick **Install** to continue.

\*It is recommended to accept the default path but a different drive may be selected (if were set in the first Extraction Installation).



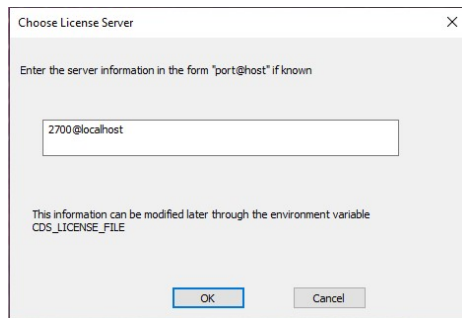
The next screen will start the installation progress.



A sub-screen dialog will appear to select either a **Unit License** or **Network (Floating) License** type to be used.

If select a **Unit** license, this will allow to place a license in the installation folder that will be sent by CAD Design Software.

If select a **Network (Floating) License** - Fill out edit box with the port and server name provided by Administrator.

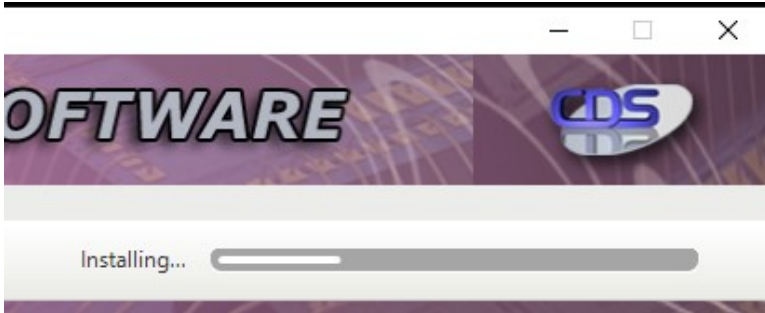


If you do not know this information, you can leave at 27000@server and edit later in the **Control Panel>Advanced Settings**. See Webpage -> [http://www.cad-design.com/support/cds\\_network\\_license.html#variable](http://www.cad-design.com/support/cds_network_license.html#variable)

After done, pick **OK** to return to the install dialog.

After selecting a radio button for the License Type, pick the **OK** button to close the **Choose License Server** dialog and return to the main installation dialog.

The Installation will continue and will take **some time** to complete.



Watch the upper-right **Installing...** progress bar will show the how much is left in the install.



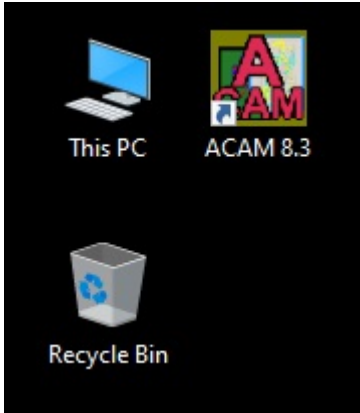
When the installation is complete, the last screen shows the **ACAM** software program has been **successfully** Installed.

In some rare cases, an error screen may appear indicating an error or unsuccessful install may have occurred.

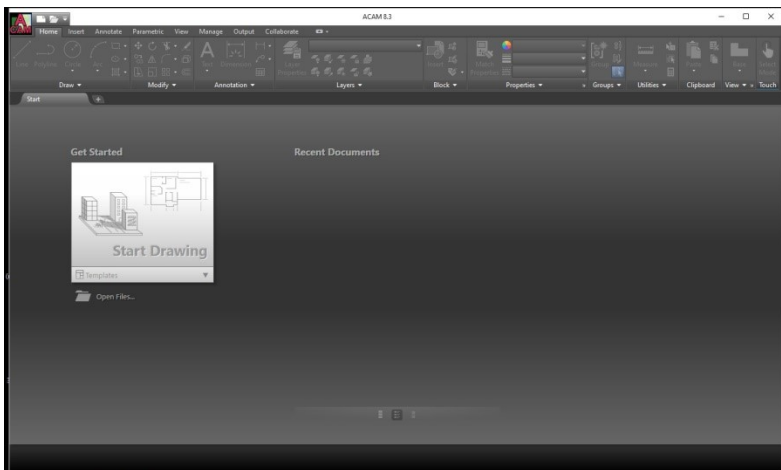
These issues may be related to picking the **Cancel** button or not having Administrative rights on the current MS Windows account.

Pick **Finish** to Exit.

Double pick the **ACAM 8.3** icon from the desktop to launch the software program.




The **ACAM Startup / Initializing** progress dialog appears (will appear each time program is loaded).



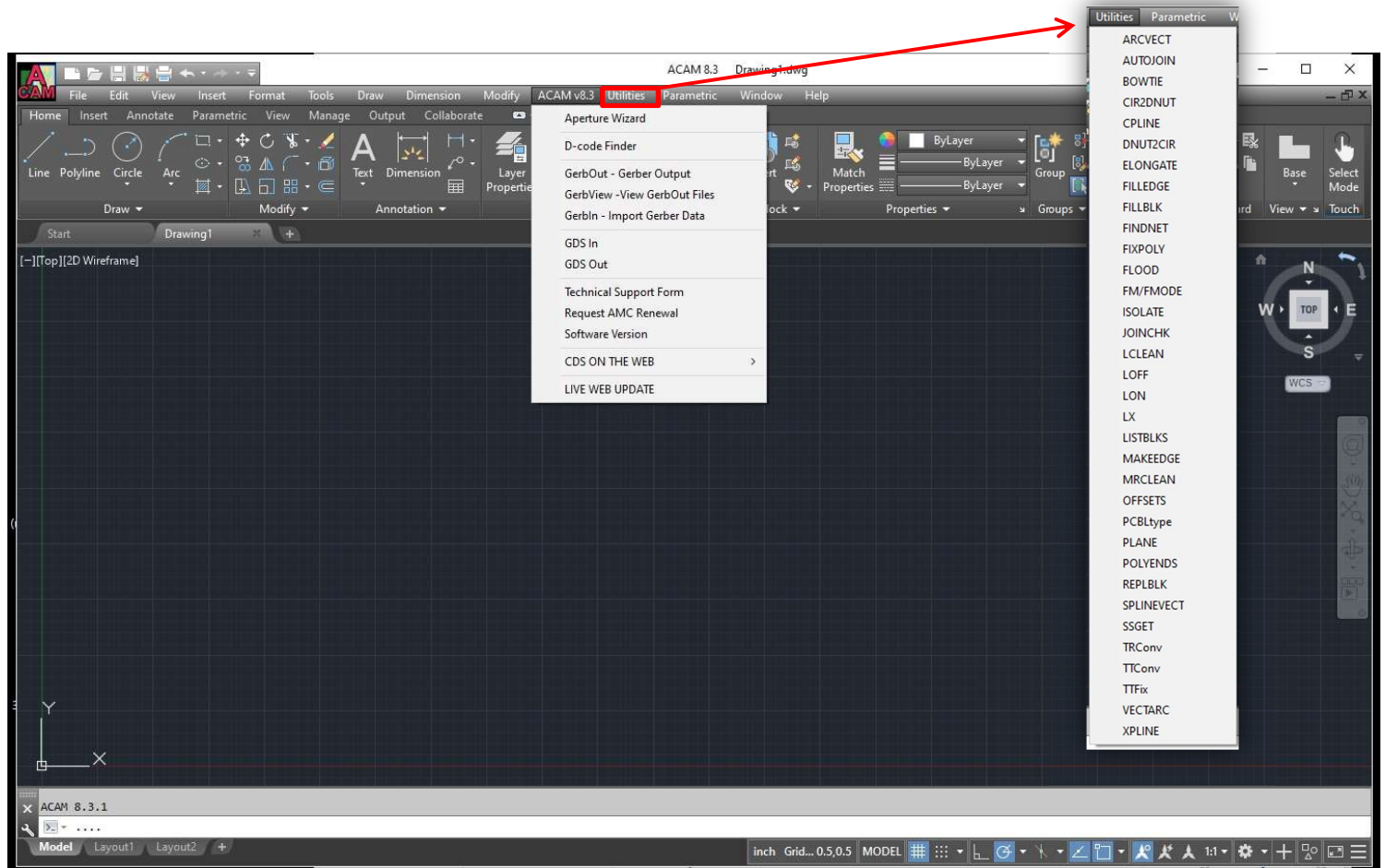
\*Depending on the **License Type** selected, the software will indicate if **no license** was found or will load with no errors. See the **software not licensed** dialog box info -> [http://www.cad-design.com/support/cds\\_software\\_not\\_licensed\\_dialog\\_box.html](http://www.cad-design.com/support/cds_software_not_licensed_dialog_box.html)

When the **ACAM** program loads, the Dashboard appears initially.

You may pick **Open Files...** or use the **ACAM** icon  Home menu.

After opening and closing drawings, the most recent will appear in the right area of dashboard.

Pick the **Start Drawing** area to begin and finish loading the **ACAM program for the First Time**



The Initial Load is complete and the **ACAM V8.3** main menu and **Utilities** menu are available\*.

\*If no license was first received or no network Server Host and Port was entered during Install, the **Software Not Licensed** dialog will appear.

See **License help webpage** here -> [http://www.cad-design.com/support/cds\\_software\\_not\\_licensed\\_dialog\\_box.html](http://www.cad-design.com/support/cds_software_not_licensed_dialog_box.html)

See the **Help Documentation** to review software commands usage (press F1 in software or Help menu).